



CERTIFICATE OF ANALYSIS

PRODUCT NAME: Certified Organic CBD Tincture - Lemon
PRODUCT STRENGTH: 1350 mg / Bottle
TINCTURE BATCH: 22062B
BEST BY DATE: 09/03/2023
HEMP EXTRACT LOT: CO222-001

Click on the links to view third-party reports

Physical Attributes

Test	Method	Specification	Results
Color	Internal	Golden to Amber	PASS
Odor	Internal	Characteristic - Coconut and Hemp, Lemon	PASS
Appearance	Internal	Golden to Amber oil in brown glass bottle with dropper.	PASS
Primary Package Eval.	Internal	Container clean and free of filth. Container caps tight and shrink bands intact	PASS
Secondary Package Eval.	Internal	Labeling Compliance Checked, Cartons sturdy and clean. Sufficient cushion material exists. Box taped and secure.	PASS

Review of Third-Party Analysis

Panel	Method	Specification	Results*	Pass/Fail
Potency - Total CBD	HPLC-UV DAD	*NLT (product strength) mg / bottle	1445.1 mg	PASS
Potency - D9-THC	HPLC-UV DAD	LOQ: <0.01% THC (Broad Spectrum)	ND	PASS
Expanded Pesticide Panel	HPLC-QQQ	LOQ: Complies with CDPHE 6 CCR 1010-21 Industrial Hemp Extract	ND	PASS
Microbial Escherichia coli (STEC)	PCR	Complies with CDPHE 6 CCR 1010-21 - LOQ 1 CFU/25 gram	Absent	PASS
Microbial Salmonella	PCR	Complies with CDPHE 6 CCR 1010-21 - LOQ 1 CFU/25 gram	Absent	PASS
Microbial Yeast and Mold	Culture Plating	Complies with CDPHE 6 CCR 1010-21 - LOQ 10 ² CFU/gram	Below LOQ	PASS
Microbial Total Coliforms*	Culture Plating	Complies with CDPHE 6 CCR 1010-21 - LOQ 10 ² CFU/gram	Below LOQ	PASS
Microbial Total Aerobic Count*	Culture Plating	Complies with CDPHE 6 CCR 1010-21 - LOQ 10 ³ CFU/gram	Below LOQ	PASS
Heavy Metals Panel	ICP-MS	Arsenic (As): ≤1.5 ppm Cadmium (Cd): ≤0.5 ppm Lead (Pb): ≤0.5 ppm Mercury (Hg): ≤1.5 ppm	ND	PASS
Mycotoxins	ICP-MS	Total Aflatoxins <20 ppb† Aflatoxin B1 < 20 ppb Ochratoxin < 20 ppb	ND	PASS
Residual Solvents	GC-HS-MSD	LOQ: Complies with CDPHE 6 CCR 1010-21 Industrial Hemp Extract	ND	PASS

*Level of Quantitation, † Parts Per Million
 ‡ Part Per Billion CFU/g=Colony Forming Units per Gram
 *Nothing Less Than
 10²=100 CFU
 10³=1,000 CFU

Quality Certified Keegan Schlittler 03/08/2021
 Keegan Schlittler Date
 Quality Assurance Manager

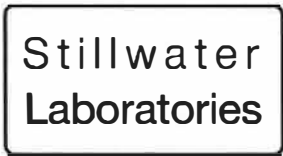


C0222-001

7USC1639 Certificate of Analysis

man. date 2/22/2021

This Product Has Been Tested and Complies with 7USC1639o(1)



certificate ID 1BS31

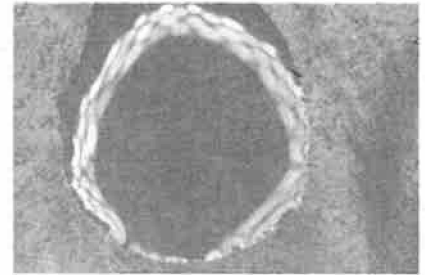
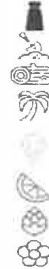
total cannabinoids 1562.0mg per 30 mL
THC total ND CBD total 1445.1m terpenes

order 9903
analysis date 2/22/2021 5:32:07 PM
test tag S1BWO
sample wgt

Inspection MSP-7.5.1.2

DESCRIPTION: Concentrate sample received in a client-labeled bottle, collected at dispensary/grow. 1 and sample tag S1BWO.

- caryophyllene
humulene
terpinolene
ocimene
beta pinene
alpha pinene
limonene
myrcene
linalool



MIP

Table with 4 columns: Potency per 30 mL, MSP-7.5.1.4, LOD, LOQ (95%CI k=2). Rows include tetrahydrocannabinolic acid (THCa), delta-9-tetrahydrocannabinol (delta 9 THC), delta-8-tetrahydrocannabinol (delta 8 THC), tetrahydrocannabivarin (THCv), cannabidiolic acid (CBDa), cannabidiol (CBD), cannabidivarin (CBDv), cannabigerolic acid (CBGa), cannabigerol (CBG), cannabinal (CBN), and cannabichromene (CBC).

Terpenes MSP-7.5.1.6 MSP-7.5.1.6

‡ = decarbed NT = not tested NL = no limit, ND = not detected, LOD = detection limit, LOQ = quantitation limit

Table with 6 columns: Microbial, Metals, Pesticides, Pesticides, Solvents, Pesticides. Each column lists various substances and their corresponding test results (PASS, FAIL) and limits.

SECURITY FEATURE: WATERMARK MUST MATCH CERTIFICATE ID AND ISSUE DATE

Certified by:

Handwritten signature of Justin M Johnston

Stillwater Laboratories Inc.
MT License L00001, 7, 8
6073 US93N Suite 5
Olney MT 59927
406-881-2019

The data in this report is the property of and is administered by Stillwater Labs. The format, layout, and security features of this report are copyrighted by Stillwater Laboratories Inc. © 2020



ISO/IEC 17025:2017



Justin M Johnston
Deputy Director

Printed
3/2/2021 1:09 PM

https://portal.a2la.org/scopepdf/4961-01.pdf

OTL1350

Batch ID or Lot Number: 22062B	Test: Microbial Contaminants	Reported: 3/7/22
--	--	----------------------------

Matrix: Finished Product	Test ID: T000196437	Started: 3/4/22	USDA License: N/A
-----------------------------	------------------------	--------------------	----------------------

Status: N/A	Methods: TM25 (qPCR) TM24, TM26, TM27(Culture Plating): Microbial	Received: 03/04/2022 @ 09:38 AM	Sampler ID: N/A
----------------	--	------------------------------------	--------------------

MICROBIAL CONTAMINANTS DETERMINATION

Contaminant	Method	LOD	LLOQ	ULOQ	Result	Notes
Total Aerobic Count*	TM-26, Culture Plating	10 ² CFU/g	10 ³ CFU/g	1.5x10 ⁵ CFU/g	None Detected	Free from visual mold, mildew, and foreign matter
Total Coliforms*	TM-27, Culture Plating	10 ¹ CFU/g	10 ² CFU/g	1.5x10 ⁴ CFU/g	None Detected	
Total Yeast and Mold*	TM-24, Culture Plating	10 ¹ CFU/g	10 ² CFU/g	1.5x10 ⁴ CFU/g	None Detected	
STEC	TM-25, PCR	10 ⁰ CFU/25 g	NA	NA	Absent	
Salmonella	TM-25, PCR	10 ⁰ CFU/25 g	NA	NA	Absent	

Eden Thompson
 Eden Thompson-Wright
 3/7/2022
 4:10:00 PM

Jackson Osaghae-Nosa
 Jackson Osaghae-Nosa
 3/7/2022
 4:32:00 PM

PREPARED BY / DATE

APPROVED BY / DATE

Definitions

LOD = Limit of Detection | LLOQ = Lower Limit of Quantitation | ULOQ = Upper Limit of Quantitation

 CFU/g = Colony Forming Units per Gram | STEC = Shiga Toxin-Producing *E. coli*

* Values recorded in scientific notation, a common microbial practice of expressing numbers that are too large to be conveniently written in decimal form.

Examples:
 10² = 100 CFU
 10³ = 1,000 CFU
 10⁴ = 10,000 CFU
 10⁵ = 100,000 CFU

Testing results are based solely upon the sample submitted to Botanacor Laboratories, LLC, in the condition it was received. Botanacor Laboratories, LLC warrants that all analytical work is conducted professionally in accordance with all applicable standard laboratory practices using validated methods. Data was generated using an unbroken chain of comparison to NIST traceable Reference Standards and Certified Reference Materials. This report may not be reproduced, except in full, without the written approval of Botanacor Laboratories, LLC.



CDPHE Certified



Certificate #4329.02